



Disease, Disability & Medicine in Medieval Europe

8th Annual Meeting, Nottingham 2014

Highfield House, University Park Campus

Infection and Long-term Sickness

Programme

Friday 5th December Graduate Workshop on Disability in Medieval Contexts (free for all Graduates)

9.00 – 9.30 Arrival, Coffee and Registration

9.30 – 9.45 Welcome by **Dr Chris King**, Director of the Institute for Medieval Research (University of Nottingham); **Dr Christina Lee** (University of Nottingham) and **Professor Cordula Nolte** (University of Bremen, *Homo Debilis* Creative Unit)

9.45 – 11.15 Legal Positions, led by **Professor Wendy Turner** (Georgia Regents University) and **Dr Jenni Kuuliala** (University of Tampere, *Homo Debilis* Creative Unit)

11.15 – 11.30 Coffee

11.30 – 13.00 Historical Perspectives, led by **Dr Irina Metzler** (Wellcome Trust Fellow, University of Swansea), **Professor Cordula Nolte** and **Dr Bianca Frohne** (University of Bremen, *Homo Debilis* Creative Unit)



13.00 – 14.00 Lunch (in Cloisters)

14.00 – 15.30 Literary Perspectives, led by **Professor Sonja Kerth** and **Dr Heiko Hiltmann** (University of Bremen, *Homo Debilis* Creative Unit)

15.30 – 16.00 Coffee

16.00 – 17.30 Material Culture, led by **Dr Sally Crawford** (Oxford University) and **Cathrin Hähn** (University of Bremen, *Homo Debilis* Creative Unit)

17.30 Close



Saturday 6th December Conference

9.00 – 9.30 Arrival, Coffee and Registration

9.30 – 9.45 Welcome by **Professor Stephen Mumford** (Dean of Arts, University of Nottingham)

Brief Introduction by **Dr Christina Lee** (University of Nottingham) and **Professor Cordula Nolte** (University of Bremen, *Homo Debilis* Creative Unit)

9.45 – 11.15

SESSION I: Infectious Disease: Treatment and Responses in Medieval and Early Modern Contexts **Respondent: Christoph Wieselhuber** (University of Bremen, *Homo Debilis* Creative Unit)

Erin Connelly (University of Nottingham): 'Treating Infection in the Middle English Translation of the *Lilium Medicinae*'

Professor John Flood (Emeritus, University of London): 'Crisis? What Crisis? Professional Responses to Sweating Sickness in England and Germany'



Dr Conor Kostick (University of Nottingham): 'Climate, Epidemics and Epizootics 400 - 1000 CE'

11.15 - 11.30 Coffee

11.30 - 13.00

SESSION II: Responses to Leprosy **Respondent: Alexander Grimm** (University of Bremen, *Homo Debilis* Creative Unit)

Dr Damien Jeanne (University of Caen): 'Religious Behavior Facing Illness in the Middle Ages: the Lepers' Case'

Ninon Duborg (University of Paris): 'Being a Leprous Cleric: In/ability to Hold a Benefice'

Andreas Dimopoulos (Brunel University): 'Disabling Law and Leprosy in the Middle Ages'

13.00 - 14.00 Lunch (in Cloisters)

14.00 - 16.00

SESSION III: Infection between Medieval and Modern **Respondent: Dr Christina Lee**

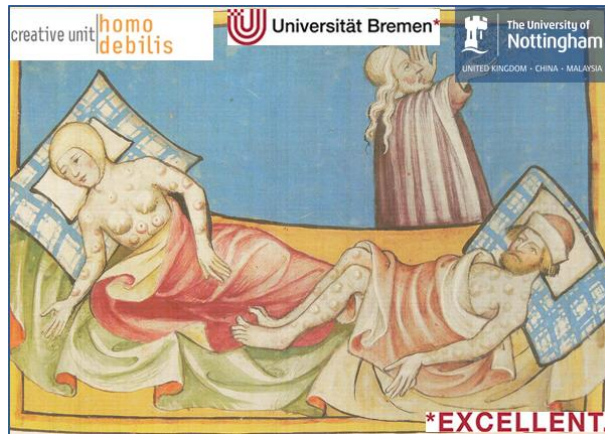
Dr Steve Atkinson (University of Nottingham): 'The biology behind plague virulence'

Dr Steve Diggle (University of Nottingham): 'Bacterial Small Talk: Quorum Sensing in Bacterial Infections'

Dr Freya Harrison (University of Nottingham): 'Testing the Efficacy of a 1,000-year-old Antimicrobial Remedy'

Professor Ben Krause-Kyora (University of Kiel): 'Leprosy - New Insights from Ancient Specimens'

16.00 - 16.30 Coffee



16.30 – 17.30

SESSION IV: Trauma and Disease **Respondent: Erin Connelly** (University of Nottingham)

Professor Wendy Turner (Georgia Regents University): 'Medieval Psychotics: Infection of the Brain, Influence of the Moon, and Intermittent Disorder'

Joanna Phillips (University of Leeds): ' "Oh, the grief of all ... Each day saw the funerals of their comrades": Infectious Disease and the Crusader Sieges of the Twelfth and Thirteenth Centuries'

18.30 Conference Dinner (Vice Chancellor's Dining Room, Trent Building)

.....

Sunday 7th December

9.30 – 11.00

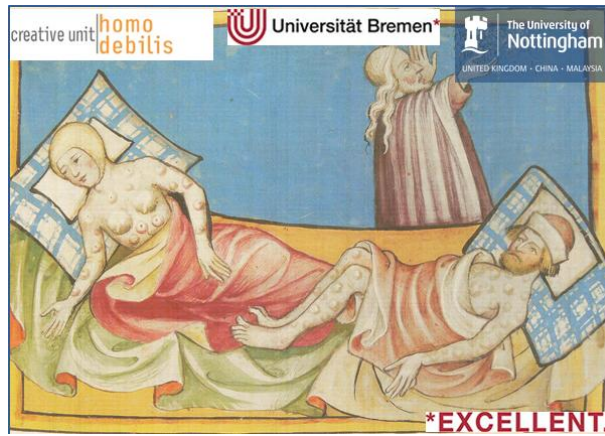
SESSION V: Miracles & Care **Respondent: Dr Irina Metzler** (Wellcome Trust Fellow/ University Swansea)

Professor Charlotte Roberts (Durham University): 'Applying the "Index of Care" to a Person who suffered Leprosy in Late Medieval England'

Dr Jenni Kuulaila (University of Tampere, University of Bremen/*Homo Debilis* Creative Unit): 'Definitions and Roles of Leprosy Miracles in Later Medieval Hagiographic Documents'

Clara Jáuregui (University of Barcelona): 'The Santa Margarida's Hospital of Barcelona: a Leper's Way of Life'

11.00 – 11.30 Coffee



11.30 - 13.00

SESSION VI: Metaphors **Respondent: Professor Wendy Turner**

Professor Sonja Kerth (University of Bremen, *Homo Debilis* Creative Unit):
'Leprosy as Metaphor? Concepts of Hansen's Disease in Mediaeval German Narratives'

Stefanie Künzel (University of Nottingham): 'Epidemic Disease in Anglo-Saxon England'

13.00 – 14.00: Lunch (in Cloisters)

14.00 – 15.00: Roundtable

15.00 Close



We would like to thank the following for their kind support: Professor Stephen Mumford, Dean of Arts/Dean's Fund, University of Nottingham; *Homo Debilis* Creative Unit, the University of Bremen; the Institute for Medieval Research, University of Nottingham; the School of English Research Committee, University of Nottingham.

Accessibility information:

The workshop and conference are taking place on the ground floor of Highfield House which has ramp access and automatic doors. Designated badge holder parking is across the road. The lecture theatre(s) are wheelchair accessible and fitted with induction loops.